



# **Hideez Remote User Manual**

March 2019

# Contents

<b>Contents</b>	1
<b>General info</b>	2
Audience	2
Related documents	2
Glossary	2
<b>Prerequisites and system requirements</b>	2
<b>Installation</b>	3
<b>Understanding Hideez Remote</b>	3
Hideez Remote topology	4
Hideez Remote flow	4
Limitations	5

# General info

## Audience

This document is intended for administrators and users who wish to enable Hideez Safe capabilities on remote workstations.

## Related documents

- Hideez Key User Manual (see <https://hideez.com/pages/downloads/>)

## Glossary

BLE - Bluetooth Low Energy

OTP - One-Time Password

## Prerequisites and system requirements

- Windows 7 or higher on the remote workstation
- Administrative rights to install and configure Hideez Remote on the remote workstation
- The remote workstation is available by IP and ports (RDP|VNC|Hideez Remote port)
- Hideez Remote software is available on the remote workstation
- Hideez Safe and BLE adapter are installed and configured properly on a local workstation
- A Hideez Key instance(s) is in place and configured properly on the local workstation

# Installation

1. Go to <https://hideez.com/pages/downloads> and download the Hideez Remote executable suitable with your remote workstation;
2. Run downloaded hideezremote.exe on the remote workstation. A new Hideez Remote icon will appear in the system tray after completion. Check context menu items by right clicking on the icon.

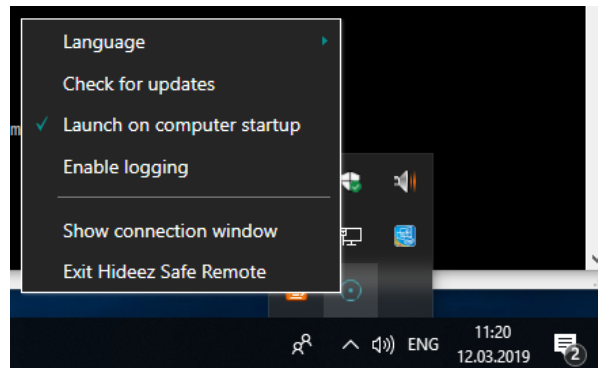


Figure 1. Hideez Remote context menu

## Understanding Hideez Remote

Hideez Remote is a Windows application that enables Hideez Key capabilities on a remote workstation via a remote session like RDP. Supported protocols are RDP and VNC.

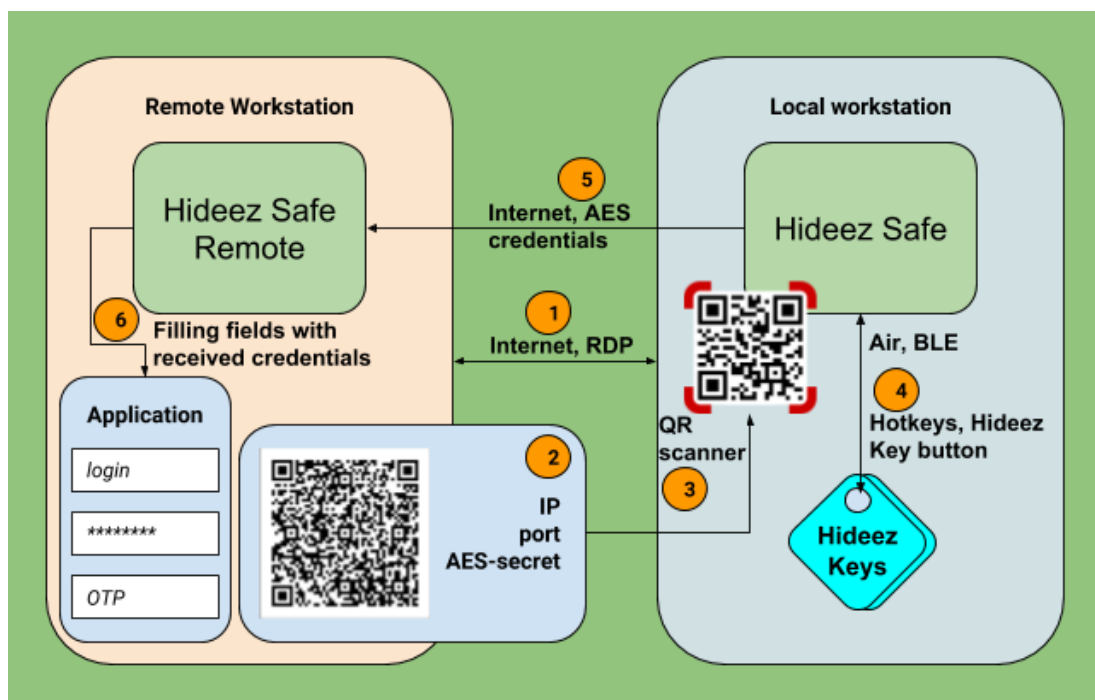


Figure 2. Hideez Remote topology and flow

## Hideez Remote topology

Hideez Remote topology shows components involved in the interaction between Hideez Safe and Hideez Remote.

The local side includes:

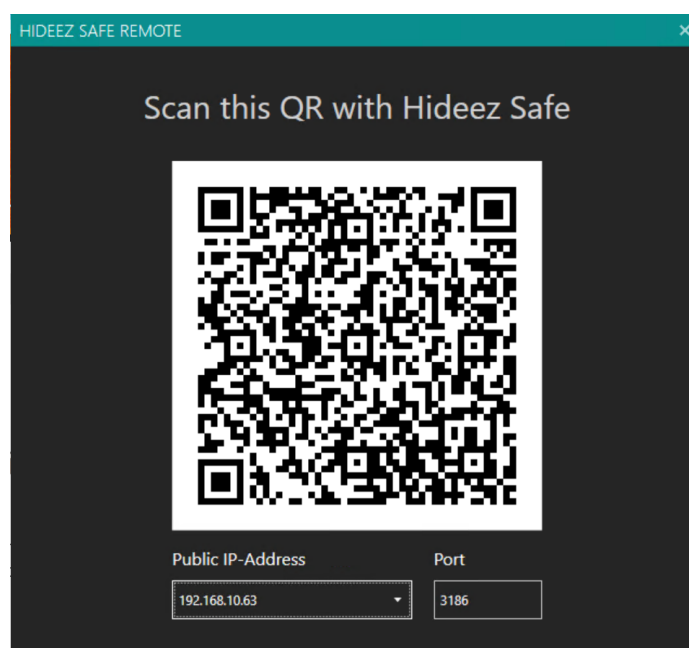
- Windows workstation with configured Hideez Safe software and activated Bluetooth transport (BLE-adapter built-in to the PC or an external BLE-dongle);
- Hideez Key as a wireless credential storage;
- A hot key or button sequence associated with the action “Connect to Hideez Remote” setup within the local Hideez Safe software installation.

The remote side includes:

- Remote Windows workstation that exposes the remote session protocol and Hideez Remote protocol via the internet to the local workstation;
- Hideez Remote software is installed.

## Hideez Remote flow

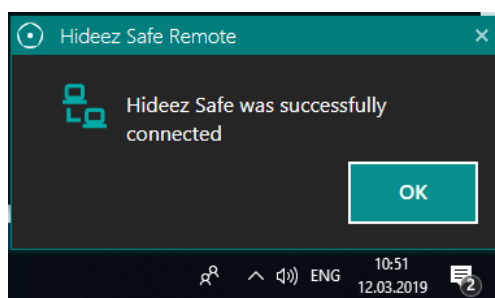
1. Setup a remote desktop session on the remote workstation.
2. Run Hideez Remote. Connection information appears on the screen encoded as a QR-code. You can choose the appropriate IP and change the port for the Hideez session. Any changes made on the screen will lead to the generation of a new QR-code.



**Figure 3. Hideez Remote connection screen**

3. On Hideez Safe on the local workstation, press the hotkey or on your local Hideez Key enter the button sequence to run the “Connect to Hideez Remote” command that will prompt Hideez Safe on the local workstation to scan the QR on Hideez Remote,

extracting the connection information - IP, port and AES-secret and setup a connection between the workstations.

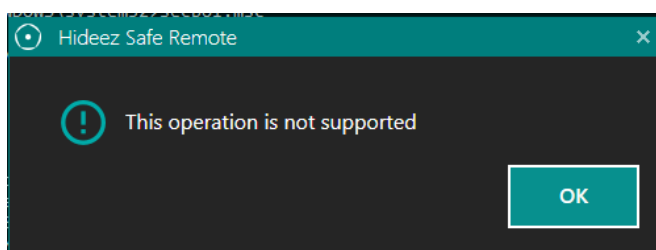


**Figure 4. Hideez Remote connection confirmation**

4. Try to access the application where the credentials from Hideez Key are needed. Use Hideez Key as you normally would to enter the credentials into the appropriate authentication fields on the remote workstation (i.e. via hotkey or button sequence).
5. The credentials will be transmitted via encrypted to the remote workstation. Hideez Remote will enter the received credentials into the appropriate fields. You should gain access to the application you wanted.

## Limitations

- You cannot use power management commands associated with the button or hotkeys. If you try to run those commands, you will receive the following error message.



**Figure 5. Hideez Remote and unsupported commands**